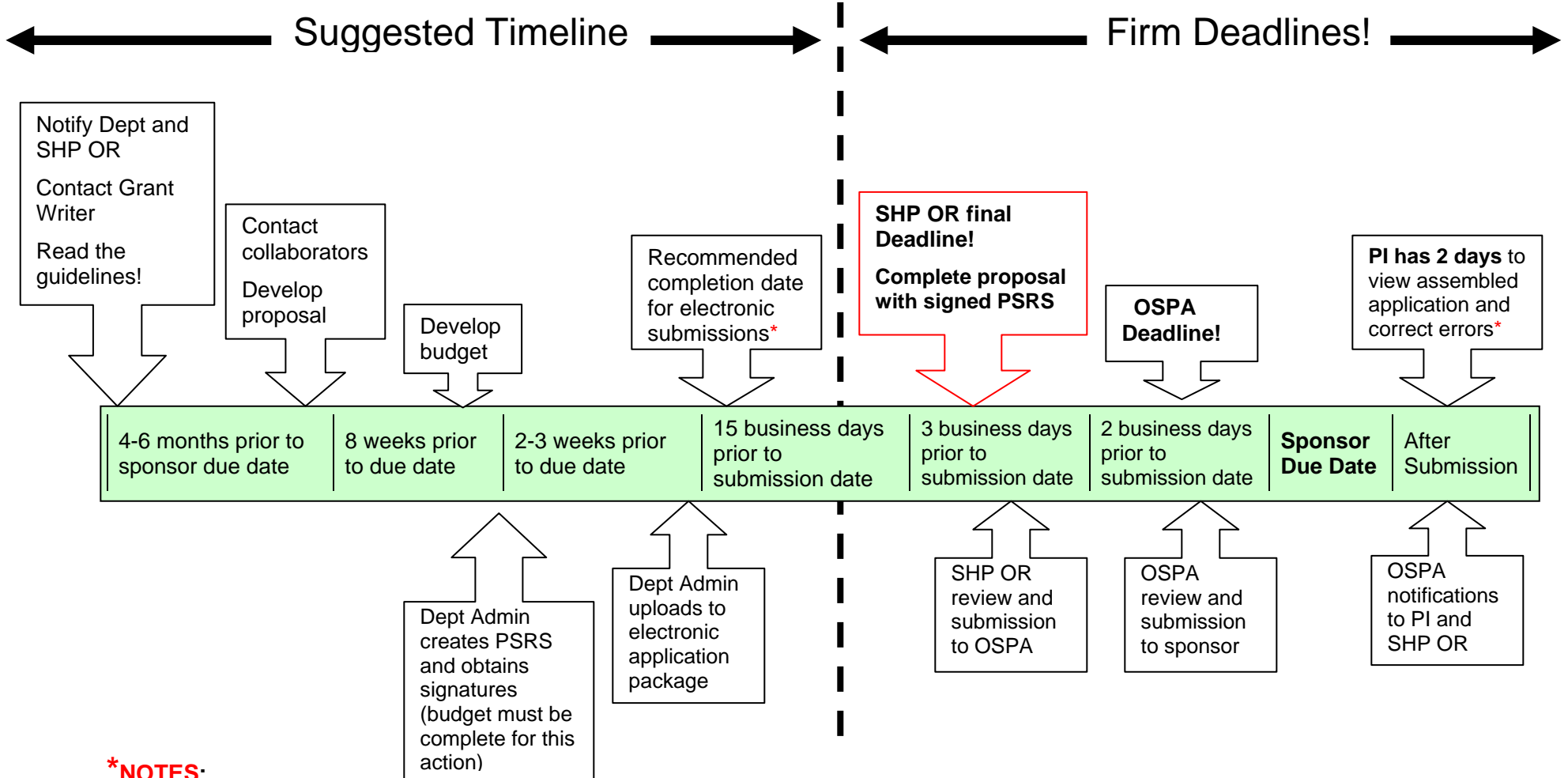


SHP Proposal Submission Timeline



***NOTES:**

- Investigators run a real risk of missing the proposal deadline if they attempt to submit proposals at the last minute.
- When technical difficulties arise, it can take as long as 15 days for an electronic submission to process.
- PI must remain available with internet and email access following the submission.
- NIH proposals: All corrections must be made within 2 days following receipt date. If final submission is sent after the receipt date, a cover letter attachment must be included identifying the system-identified errors/warnings that have been corrected.
- New investigators are strongly advised to follow the early submission guidelines and submit proposals to the SHP Office of Research no less than 15 days in advance of the submission date.